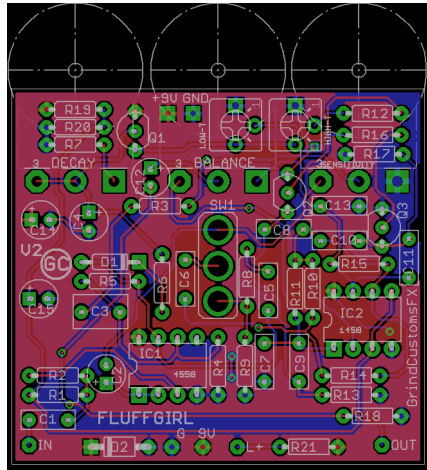


# GRIND CUSTOMS FX

[WWW.GRINDCUSTOMSFX.COM](http://WWW.GRINDCUSTOMSFX.COM)

## FLUFF GIRL



R1	220K
R2	2K7
R3	4K7
R4	2M2
R5	220K
R6	100R
R7	47K
R8	100K
R9	47K
R10	470K
R11	470K
R12	22K
R13	47K
R14	470K
R15	470K
R16	22K
R17	47K
R18	47K
R19	47K
R20	47K
R21	CLR

C1	47N
C2	10U
C3	470N
C4	4U7
C5	47N
C6	47N
C7	560P
C8	22N
C9	22N
C10	4N7
C11	4N7
C12	1U
C13	560P
C14	10U
C15	10U

D1	1N914
D2	1N4001
Q1	2N5088
Q2	2N5088
Q3	2N5088
IC1	LM1458
IC2	RC4558
SENSITIVITY	B10K
DECAY	C500K
BALANCE	B5K
HIGH-TRIM	10K
LOW-TRIM	10K
SW1	SPDT

# GRIND CUSTOMS FX

[WWW.GRINDCUSTOMSFX.COM](http://WWW.GRINDCUSTOMSFX.COM)

## HISTORY

Réj is a filter whore. I mean, he really has a problem and should probably have therapy. So when he gets one, he decides how it might be fettled and a project comes out of it.

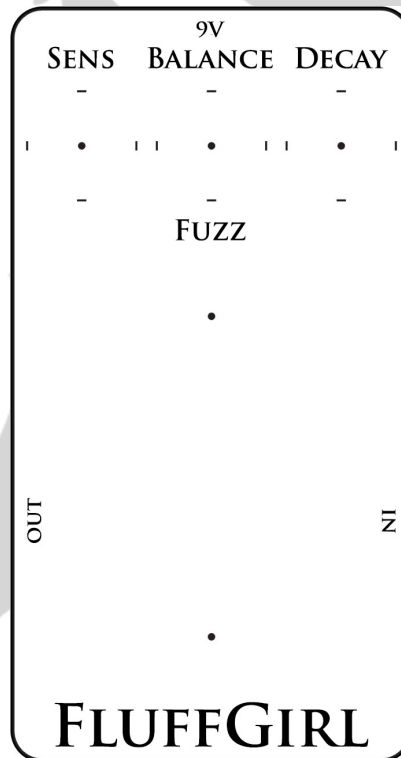
This is an EHX BassBalls that's been tweaked a little and it works niice.

Forrest did the PCB, because that's what he does. That's all he does..., and he will not stop until all the PCBs are made. Or Sarah Connor is dead. Either/or.

## SETTING IT UP

The only thing that might be a little weird about this one is the setup. It's got two filters that run at the same time; one on high frequencies, and one on low. That's its thing, and it makes it quite vocal on some settings. The easiest way to set it up is to turn the balance counter clockwise and set the low trimmer to taste. Then turn it fully clockwise and set the high trimmer to taste. I find it sounds best if they're a little away from each other.

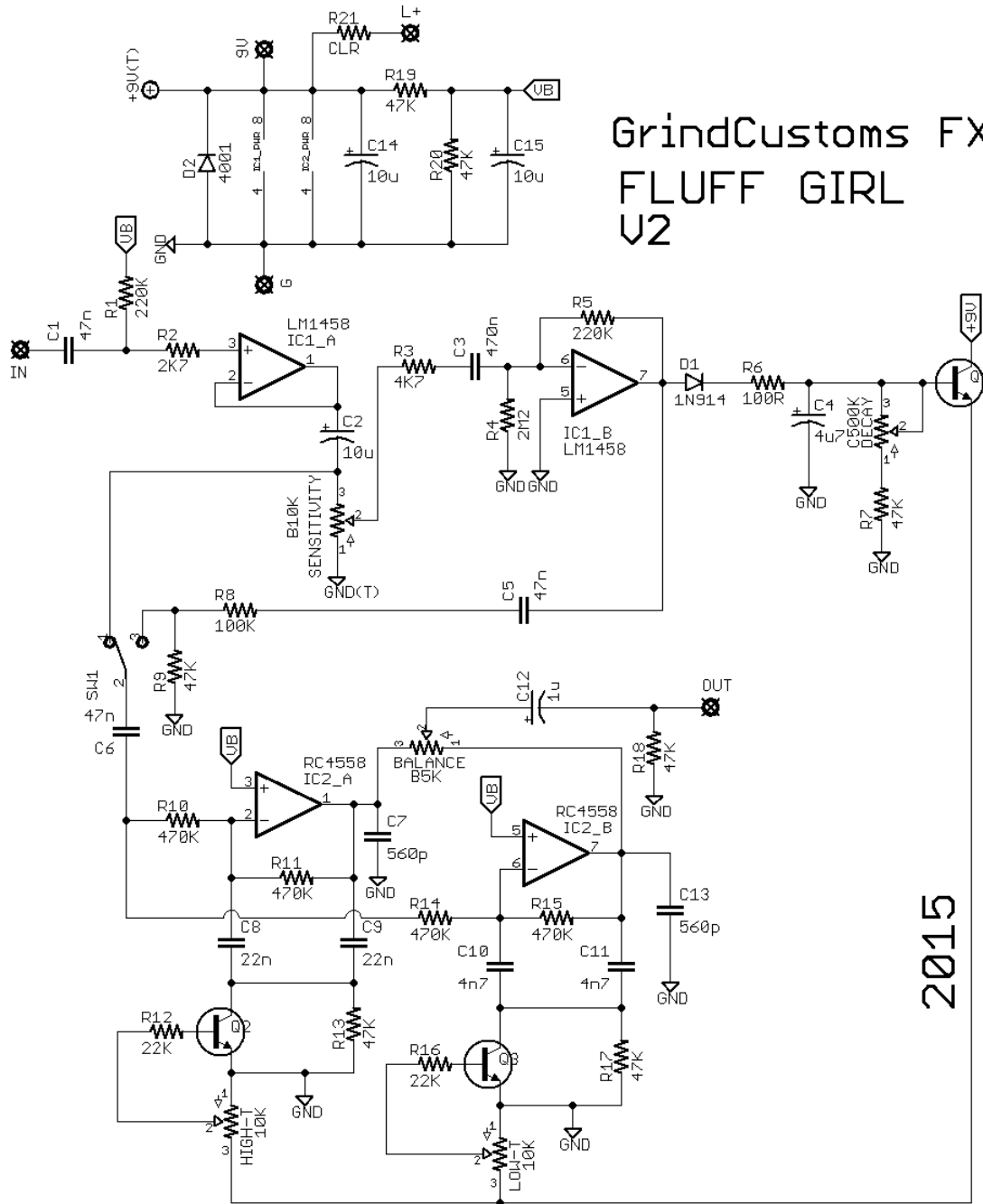
That's it really. Sens and decay do what you'd think they do. The switch is 'fuzz'. It makes the effect stand out a bit.



# GRIND CUSTOMS FX

[WWW.GRINDCUSTOMSFX.COM](http://WWW.GRINDCUSTOMSFX.COM)

GrindCustoms FX  
FLUFF GIRL  
V2



2015