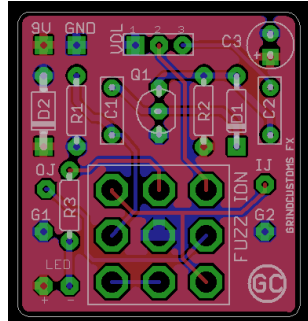


# GRIND CUSTOMS FX

[WWW.GRINDCUSTOMSFX.COM](http://WWW.GRINDCUSTOMSFX.COM)

## FUZZION

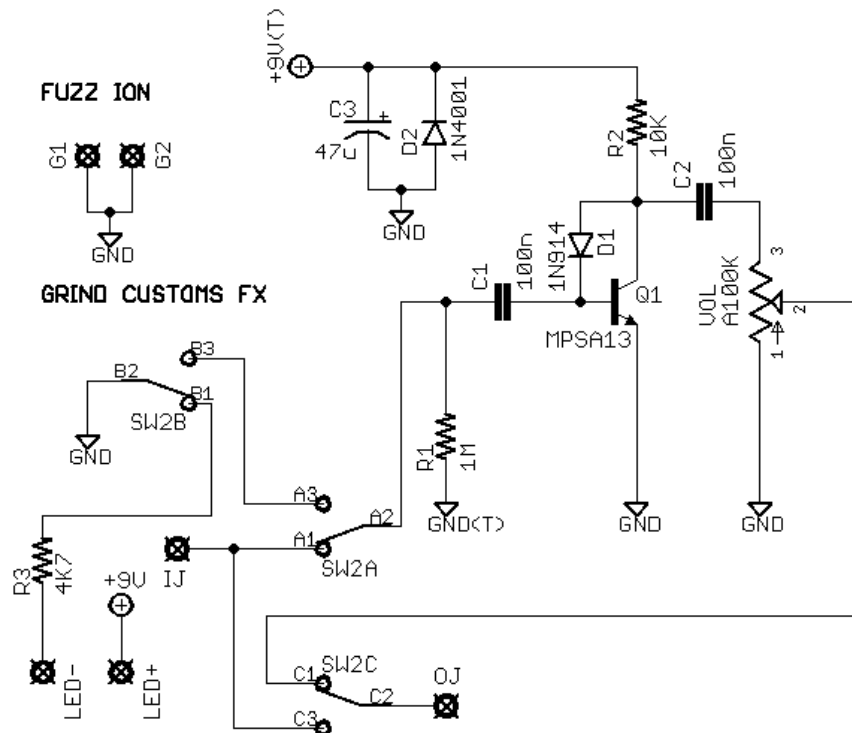


PCB by Forrest.

R1	1M
R2	10K
R3	4K7

C1	100n
C2	100n
C3	47U

D1	1N914
D2	1N4001
Q1	MPSA18
VOLUME	A100K



This is our beginner project, all easy to source parts and mounts on a 3PDT footswitch to minimize wiring. It is a simplified Bazz Fuss.

Once the PCB is populated, mount it on the stomp with the components facing down (solder side on top), so the in and out pads are on the correct sides.