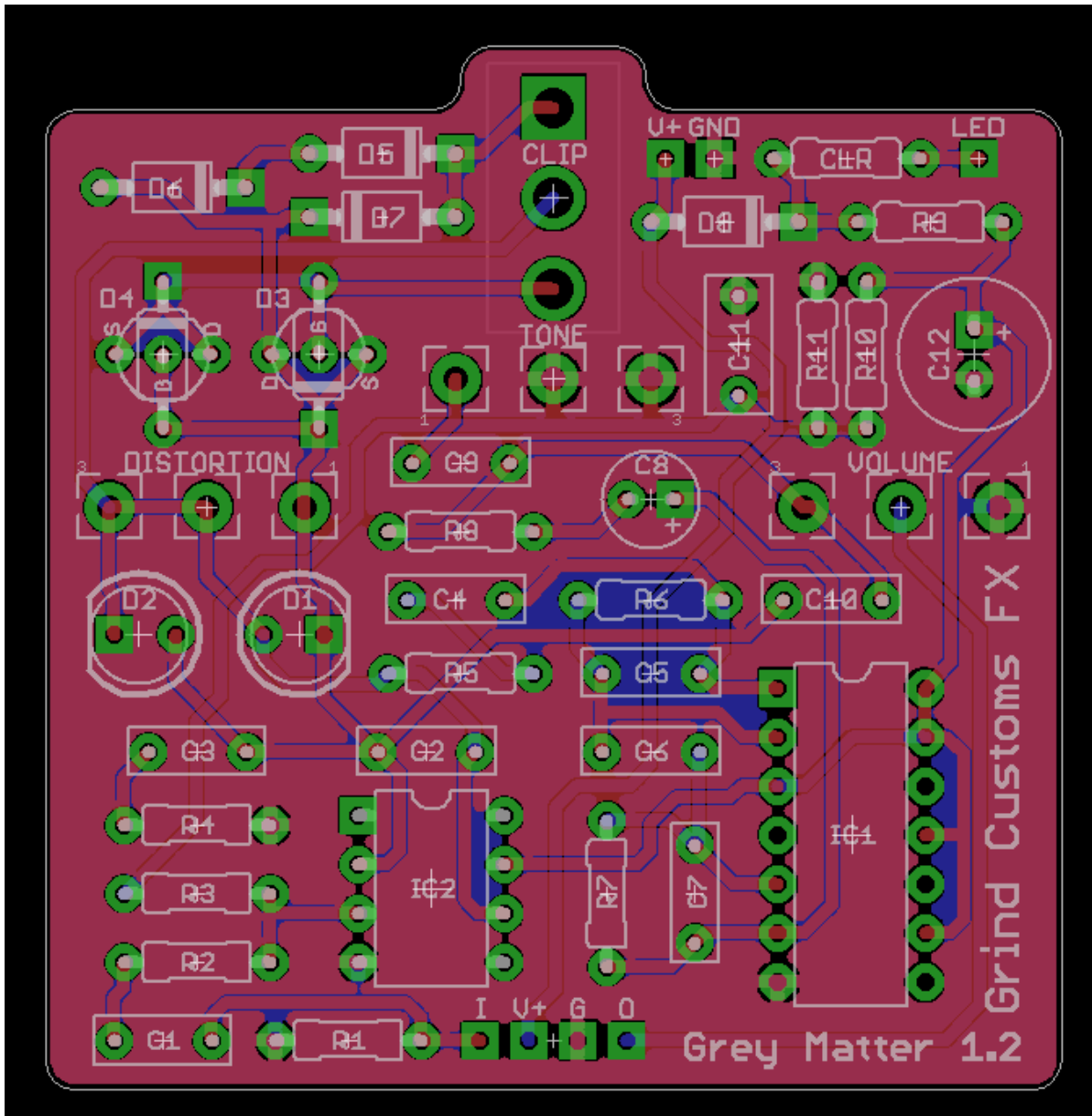


# GRIND CUSTOMS FX

[WWW.GRINDCUSTOMSFX.COM](http://WWW.GRINDCUSTOMSFX.COM)

## GREY MATTER



### OVERVIEW

This effect is based on the Stone Grey distortion with added clipping options.

Standard clipping are the ubiquitous 1N914s, but we've added pads to allow you to swap out a pair of those with some jfets, should the urge take you to do so.

# GRIND CUSTOMS FX

[WWW.GRINDCUSTOMSFX.COM](http://WWW.GRINDCUSTOMSFX.COM)

R1	1M	C1	2N2	D1-D2	LED
R2	14K7	C2	100P	D3-D7	1N914?
R3	470K	C3	47N	D8	1N5817
R4	4K7	C4	10N		
R5	200K	C5	100P	IC1	4069N
R6	470K	C6	47N	IC2	TL071P
R7	1M	C7	100P		
R8	10K	C8	4U7	DISTORTION	A1M
R9	100R	C9	22N	TONE	A50K
R10	1M	C10	15P	VOLUME	A50K
R11	1M	C11	100N		
CLR	4K7	C12	100U	CLIP	SPDT ON/ON



# GRIND CUSTOMS FX

[WWW.GRINDCUSTOMSFX.COM](http://WWW.GRINDCUSTOMSFX.COM)

VOLUME CLIP DSTRTN

TONE

GREY MATTER

Detailed description: This is a schematic of a guitar pedal labeled 'GREY MATTER'. It features four knobs: 'VOLUME' at the top left, 'CLIP' at the top center, 'DSTRTN' at the top right, and 'TONE' in the middle. The pedal has a rectangular body with rounded corners and a black border. There are also some faint markings on the top and bottom edges of the pedal face.

VOLUME CLIP DSTRTN

TONE

GREY MATTER

Detailed description: This is a schematic of a guitar pedal labeled 'GREY MATTER'. It features four knobs: 'VOLUME' at the top left, 'CLIP' at the top center, 'DSTRTN' at the top right, and 'TONE' in the middle. The pedal has a rectangular body with rounded corners and a black border. There are also some faint markings on the top and bottom edges of the pedal face.