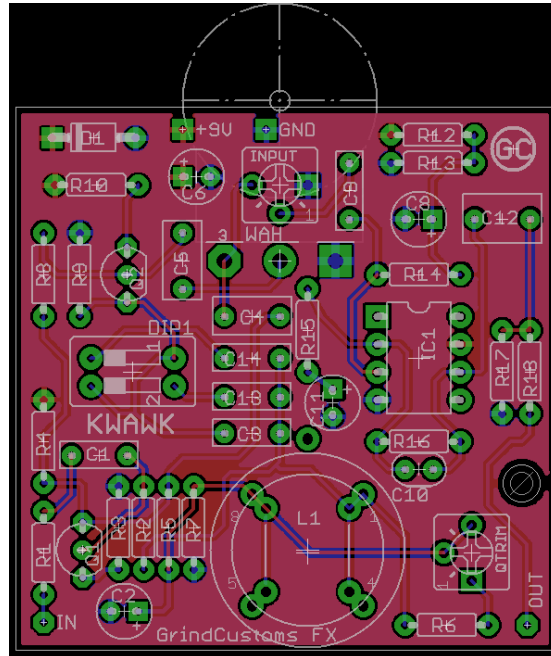


GRIND CUSTOMS FX

WWW.GRINDCUSTOMSFX.COM

KWAWK WAH



PCB by Forrest

R1	47K	C1	10N	Q1 & Q2	2N5088
R2	1K5	C2	4.7U	IC1	LF351N
R3	470R	C3	10N	D1	1N4001
R4	22K	C4	220N	Q	50K TRIMMER
R5	470K	C5	220N	INPUT	500K TRIMMER
R6	22K	C6	47U	WAH	B100K
R7	100K	C8	47U	DIP1	2WAY DIP SWITCH
R8	470K	C9	100N	L1	INDUCTOR
R9	10K	C10	47P		
R10	1K	C11	10U		
R12	47K	C12	1U		
R13	47K	C13	10N		
R14	470K	C14	10N		
R15	47K				
R16	47K				
R17	47K				
R18	22K				

Output mod: Change R16 for 68K. This will allow a lot more boost from the buffer section and can be useful if you decide to make the level control external.

GRIND CUSTOMS FX

WWW.GRINDCUSTOMSFX.COM

HISTORY

We wanted a nice compact drop-in wah board that would offer useful options, not be too complicated and give good sounds. TaaDaa!

This PCB has been designed to be used in a wah enclosure. But you could build it in a stomp box with a pot and use it as a cocked wah pedal also.

SCHEMATIC

