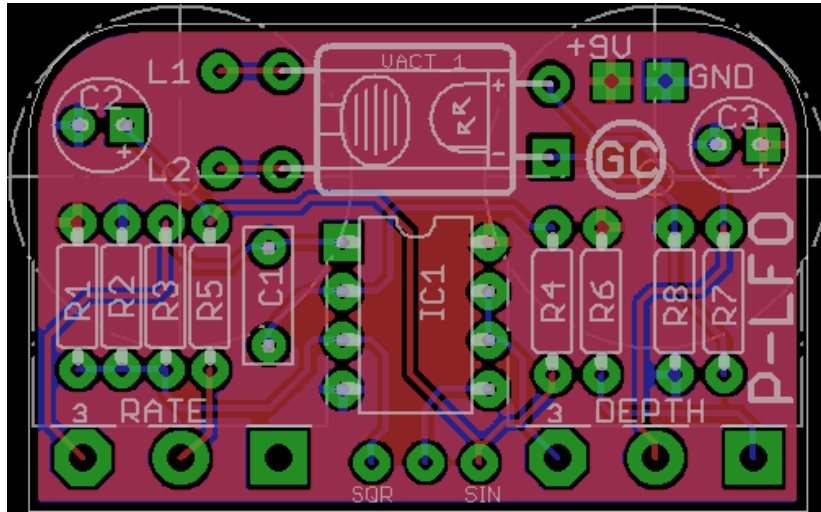


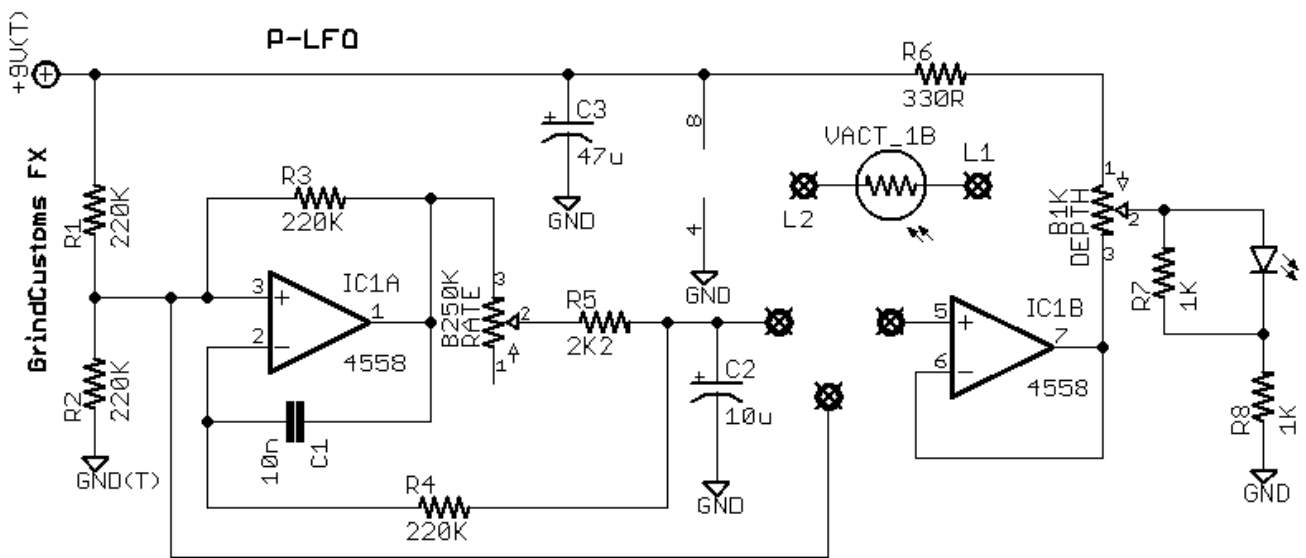
GRIND CUSTOMS FX

WWW.GRINDCUSTOMSFX.COM

PLFO



R1	220K	C1	10N	IC1	4558
R2	220K	C2	10U	RATE	B250K
R3	220K	C3	47U	DEPTH	B1K
R4	220K			WAVE	B500K/SWITCH
R5	2K2			VACTROL	VTL5C3
R6	330R				
R7	1K				
R8	1K				



GRIND CUSTOMS FX

WWW.GRINDCUSTOMSFX.COM

HISTORY

The PLFO utility board is actually the LFO from Forrest's Shoot The Moon tremolo. Here presented separately so you can add it to other circuits, like to a delay to get modulation for example. We'll go into that in the next section.

WAVE POT OR SWITCH

Wire the SIN pad to lug 1 or switch 1.

Wire the SQR pad goes to lug 3 or switch 3.

The middle pad goes to the middle lug of the pot or the middle pin of the switch.

When using a switch, if you use an on/off/on, in the off position it will turn the modulation off. If you want to add a switch to the pot to do the same, add a SPST in line between the middle pad and lug/pin2

If you want standard modulation with no switches, jumper the SIN and middle pads.

VACTROL

If you cannot source the required vactrol, the PLFO works well with a 'roll your own' vactrol consisting of a [Tayda LDR](#) and a 5mm yellow LED (red also works well).

ADDING MODULATION TO A DEPROFUNDIS

Adding standard modulation it to a DeProfundis, is as easy as just running L1 to pin 3 of the time pot (or pad M1 of a Profundis), and L2 to ground. With the Wave pads jumpered.

To have an on/off switch on the modulation, instead of the jumper run the SIN and middle pads through a switch.

To be able to use square or sine waves, use an on/off/on switch for wave.

To have a wave pot you use a pot in place of the switch.

To be able to turn the modulation on and off, you'll add a switch on between the middle pad and the lug 2 of the pot.