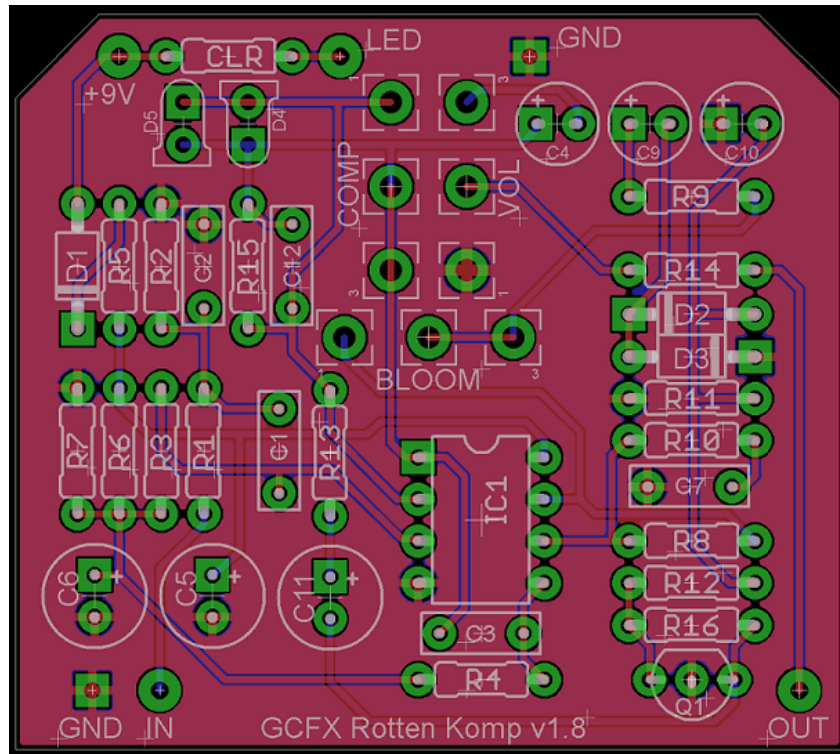


GRIND CUSTOMS FX

WWW.GRINDCUSTOMSFX.COM

ROTTEN KOMP



PCB by Dave

R1	200R	C1	33N	D1	1N4001
R2	1M	C2	100P	D2-D3	1N5817
R3	1M	C3	1N5	D4-D5	3MM RED LED
R4	1M	C4	10U	Q1	2N5457
R5	22R	C5	100U	IC1	TL072
R6	39K	C6	100U	BLOOM	A250K
R7	47K	C7	220N	VOLUME	A10K
R8	39K	C8		COMP	A10K
R9	22R	C9	10U		
R10	10K	C10	10U		
R11	10K	C11	100U		
R12	1M	C12	15N		
R13	22R				
R14	200R				
R15	5K1				
R16	1M				

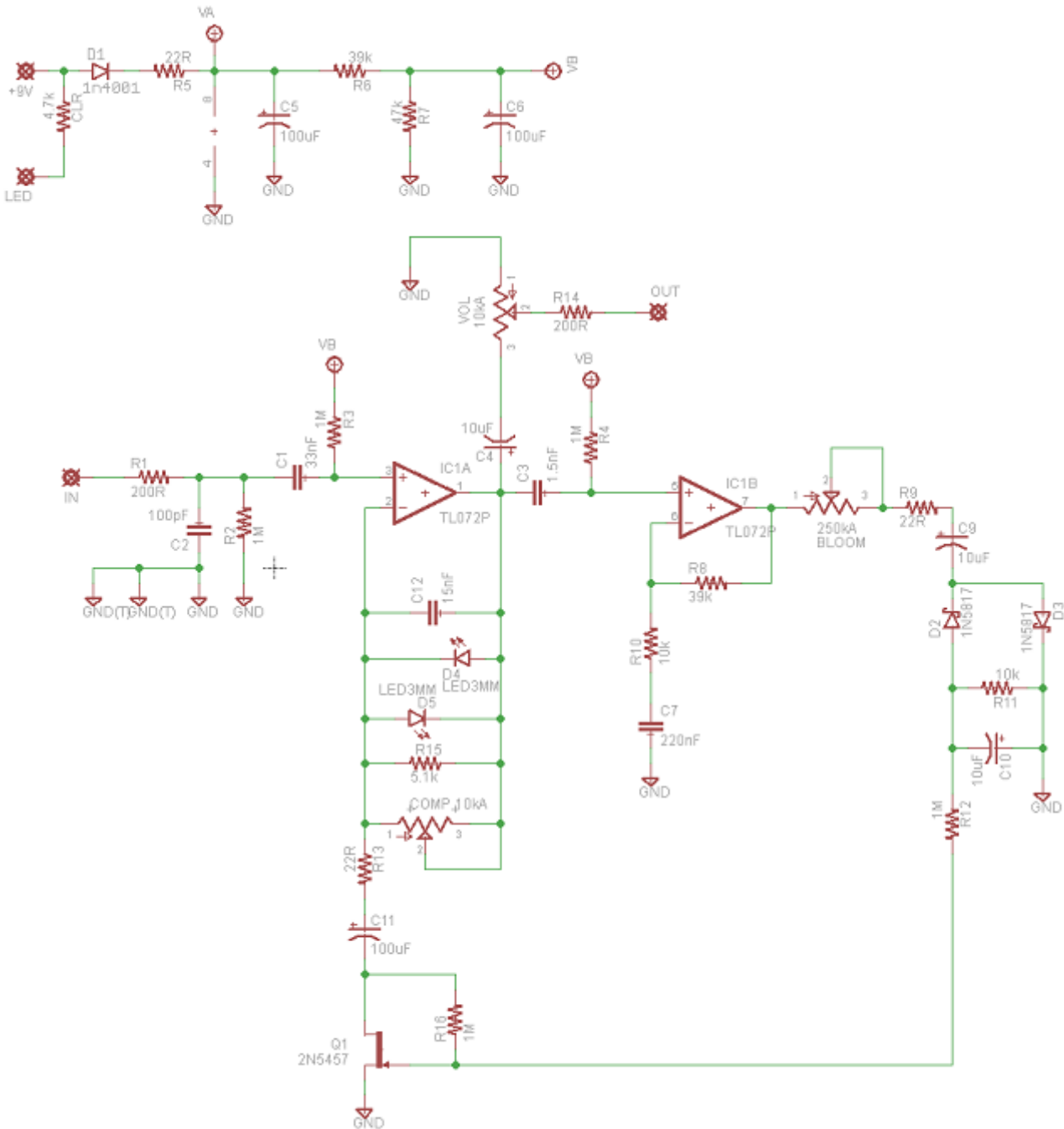
GRIND CUSTOMS FX

WWW.GRINDCUSTOMSFX.COM

HISTORY

Rej built a few Love Squeeze clones on vero and Dave got bored of seeing them done that way so did a layout for it. At the time Rej had discovered that adding serial resistance in the compressor side chain had a nice effect on the low-end response and added headroom. The Bloom control was born. If you want to make it 'stock', link pads 1 and 2 of Bloom and omit the pot.

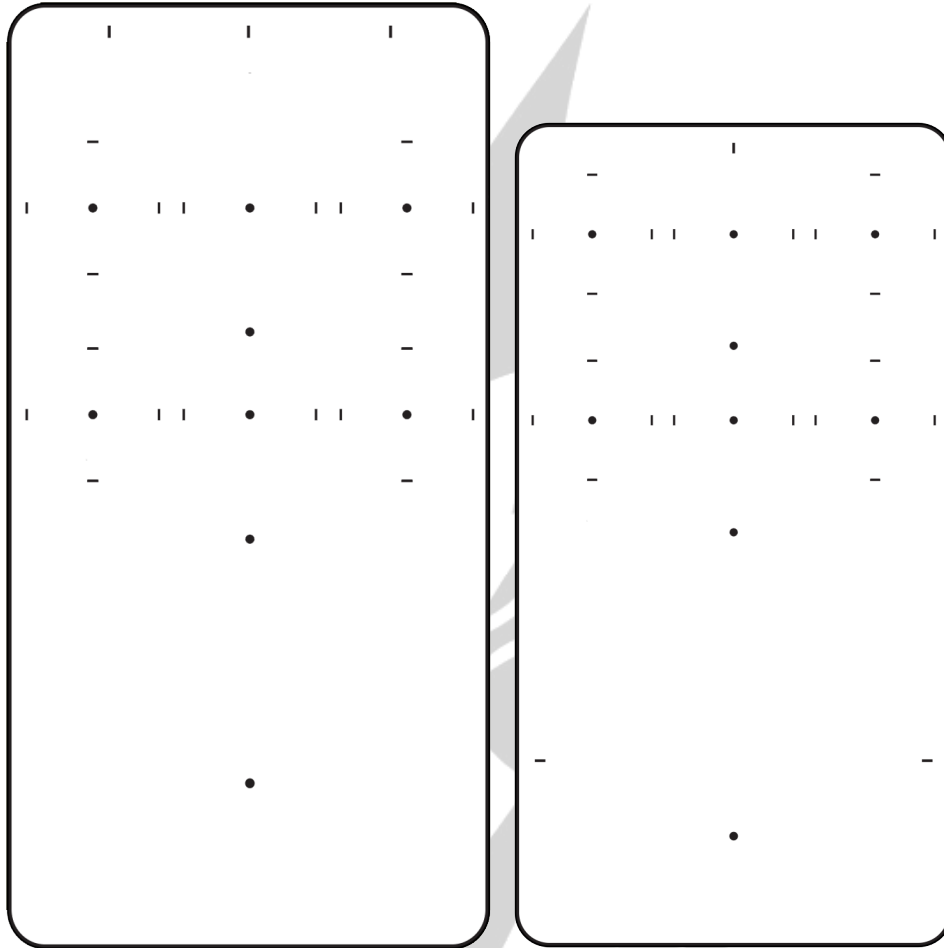
The original layout came from FSB and funnily enough, some discovery work done by myself and Cleggy. This is all before we even knew Rej. Small world and all that!



GRIND CUSTOMS FX

WWW.GRINDCUSTOMSFX.COM

STANDARD 125B / 1590B DRILLING TEMPLATES



The PCB was designed to work either in a 1590B or 125B enclosure. There are extra ground pads and 9V pads to give alternate ways of wiring it up, they don't need to be all connected. Also, if a bypass daughter board with LED is used, you can omit the on-board current limiting resistor (CLR).