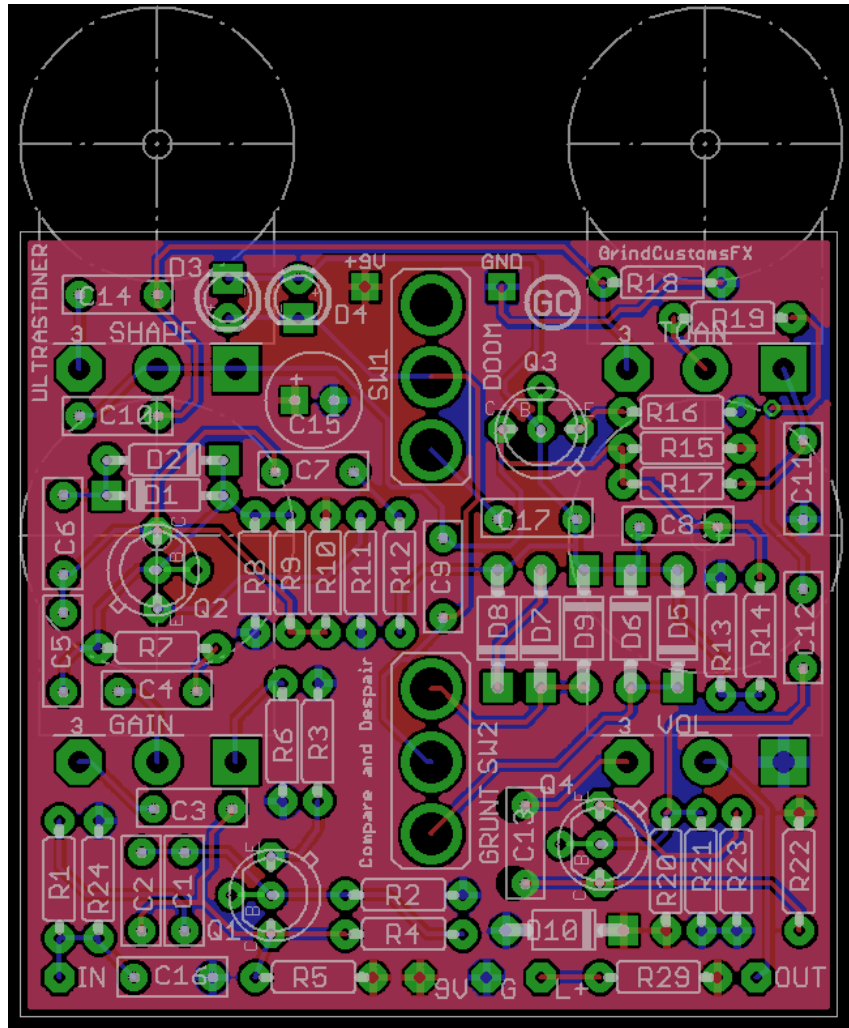


GRIND CUSTOMS FX

WWW.GRINDCUSTOMSFX.COM

ULTRASTONER



GROUP HUG

This project is the result of an unholy alliance of four people in three different countries. Firstly there's the PCB elf Forrest (CultureJam) who designed the PCB and put up with the many changes we kept requesting (can I have the quote pleasee?). Next Rej brings the doom from the ice-cold north. Finally Cleggy and myself (Juansolo) in the land of fog, swore a bit and did some stuff with calculators.

OVERVIEW

The UltraStoner Mk2 is the 'standard' build on this PCB. Its brief was to be ball-shakingly awesome, which it is. But being a muff you can build other slightly less awesome variants on it too. So it was only right to make sure you can build all the old favorites on there, along with some funky mods.

Henceforth cometh the table of muffage...

GRIND CUSTOMS FX

WWW.GRINDCUSTOMSFX.COM

TABLE OF MUFFAGE

The table on page 3 contains a variety of Muff recipes can be created on this board. The values in purple are suggestions should you wish to add the shape pot and doom switch to some older designs that don't have them as standard. With the recommended values the idea is that the shape pot all the way counter clockwise will be stock and all the way clockwise it should be flat or something like. It might seem quite subtle on some builds, but it could help cut through the mix. If you want to stay stock, just omit the shape pot and cap.

We've found that values between 1nF and 2n2 seem to be the sweet spot for the doom switch on other builds. Socket and see, as we say in the DIY world. Otherwise again, just omit the switch and cap if you don't want it.

The second stage clippers are switchable to your taste. If you don't want to do that however, omit the switch and just fit the stock diodes in place of the LEDs (D3-4).

R19 is only used in the Ultrastoner layout and on all other layouts it needs to be a jumper or 0R resistor. This is a throwback to the muff on which it was originally based. Essentially it reduces the signal by about 25% before Q4 to stop it compressing as much with the gain up. It's another place you can experiment if you wish.

Cx and Cy are not catered for on this layout so these need adding as stated.

Due to the tightness of layout, for the caps greater than 220nf, MLCC are recommended.

Doom is an SPDT on/on. Grunt is a SPDT on/off/on. Omit the LEDs in D3-D4 if you want the centre position to be a diode lift (not really recommended).

TRANSISTOR CHOICES

The original EHX muffs used a selection of transistors, usually with a quite high hfe, that are unobtainable now in those sorts of ranges. So you'll want to use an alternative. For some builds we've put in suggestions (rcmnd) for you to try.

The new funky generic transistor layout means you can use a regular style or 'can' in this PCB. Also it makes using Japanese transistors that require a leg twist, much easier to fit. Just check the datasheet for the transistor you plan to use and make sure the Emitter Base and Collector tally up with the pads (labeled E, B & C).



As for hfe; aim for somewhere in the 400-700 range. Saying that the circuit is very tolerant so don't be afraid to experiment. Here are some transistors you might want to try: 2SC1570, BC549C, BC550C, BC109C, 2N2222A, 2N5088, MPSA18. Again, socket and see what you like.

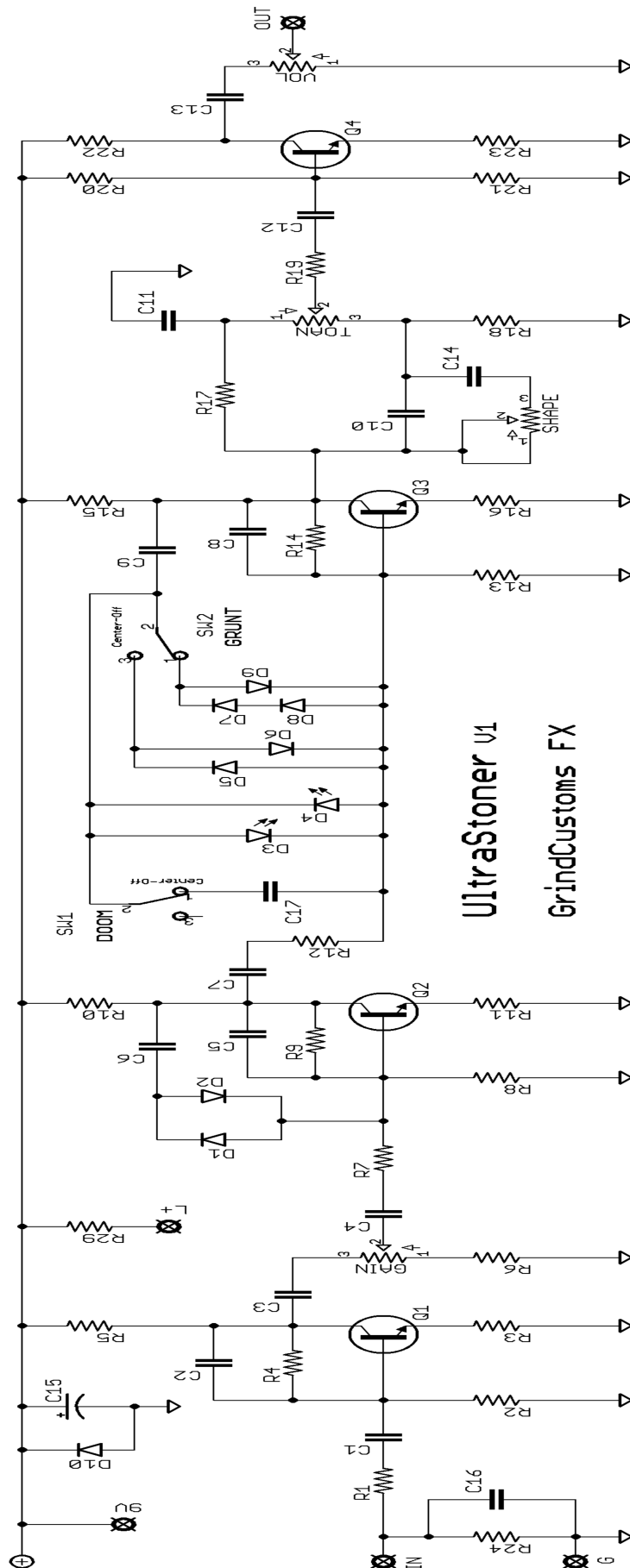
GRIND CUSTOMS FX

WWW.GRINDCUSTOMSFX.COM

	Part Number	Ultra-stoner Mk2	TSM680 Mk2	DGM 3	Skreddy Mayo	1971 Triangle	Civil War Russian	Green Russian	Third Edition	Ram's Head	Violet Ram's Head
input	R1	33k	33k	33k	33k	33k	39k	39k	39k	39k	39k
base-gr Q1	R2	100k	100k	100k	100k	100k	100k	100k	100k	47k	100k
emmitter-gr Q1	R3	100R	150R	100R	100R	100R	390R	390R	100R	120R	100R
C-B Q1	R4	470k	470k	470k	470k	470k	470k	470k	470k	470k	470k
9v Q1	R5	18k	15k	12k	18k	18k	12k	12k	15k	10k	15k
sustain1	R6	820R	470R	560R	820R	1k	1k	1k	1k	1k	1k
in Q2	R7	8k2	7k5	8k2	8k2	8k2	10k	10k	8k2	10k	8k2
base-gr Q2	R8	56k	56k	100k	56k	100k	100k	100k	100k	100k	100k
C-B Q2	R9	470k	470k	470k	470k	470k	470k	470k	470k	470k	470k
9v Q2	R10	10k	22k	12k	10k	10k	12k	12k	15k	10k	10k
emmitter-gr Q2	R11	100R	100R	100R	100R	100R	390R	390R	100R	150R	100R
in Q3	R12	8k2	7k5	8k2	8k2	8k2	10k	10k	8k2	10k	8k2
base-gr Q3	R13	100k	100k	100k	100k	100k	100k	100k	100k	100k	100k
C-B Q3	R14	470k	470k	470k	470k	470k	470k	470k	470k	470k	470k
9v Q3	R15	18k	22k	12k	18k	18k	12k	12k	15k	15k	15k
emmitter-gr Q3	R16	100R	100R	100R	100R	100R	390R	390R	100R	150R	100R
tone down	R17	33k	33k	33k	33k	33k	20k	20k	39k	22k	39k
tone up	R18	33k	33k	33k	33k	33k	22k	22k	100k	39k	39k
tone out	R19	8k2	Jumper	Jumper	Jumper	Jumper	Jumper	Jumper	Jumper	Jumper	Jumper
9v base Q4	R20	390k	422k	470k	390k	390k	470k	470k	390k	430k	390k
base-gr Q4	R21	100k	100k	100k	100k	100k	100k	100k	100k	100k	100k
9v Q4	R22	10k	10k	12k	10k	10k	10k	10k	10k	15k	10k
emmitter-gr Q4	R23	2k7	2k7	2k7	2k7	2k7	2k7	2k	2k2	3k3	2k7
pulldown	R24	1M	1M	1M	1M	1M	1M	1M	1M	1M	1M
LED CLR	R29										
volume Pot		A100K	A100K	A100K	A100K	A100K	A100K	A100K	A100K	A100K	A100K
sustain Pot		B100K	B100K	B100K	B100K	B100K	B100K	B100K	B100K	B100K	B100K
tone Pot		B100K	B100K	B100K	B100K	B100K	B100K	B100K	B100K	B100K	B100K
shape Pot		C500K	C500K	C500K	C500K	C500K	C500K	C500K	C500K	C500K	C500K
input	C1	1uF	470nF	100nF	100nF	100nF	100nF	100nF	1uF	10uF	100nF
C-B Q1	C2	470pF	470pF	470pF	470pF	470pF	430pF	470pF	500pF	560pF	470pF
sustain3	C3	220nF	100nF	100nF	100nF	100nF	100nF	100nF	1uF	100nF	100nF
in Q2	C4	220nF	100nF	100nF	220nF	100nF	100nF	100nF	1uF	100nF	100nF
C-B Q2	C5	470pF	680pF	470pF	470pF	470pF	430pF	470pF	500pF	560pF	470pF
diodes Q2	C6	1uF	680nF	100nF	220nF	100nF	47nF	47nF	100nF	100nF	100nF
in Q3	C7	330nF	220nF	100nF	220nF	100nF	100nF	100nF	1uF	100nF	100nF
C-B Q3	C8	470pF	680pF	470pF	470pF	470pF	430pF	470pF	500pF	560pF	470pF
diodes Q3	C9	100nF	680nF	100nF	220nF	100nF	47nF	47nF	100nF	1uF	100nF
tone up	C10	1.5nF	3.3nF	3.9nF	4.7nF	4nF	3.9nF	3.9nF	3.9nF	4.7nF	3.9nF
tone down	C11	15nF	10nF	10nF	10nF	10nF	10nF	10nF	10nF	10nF	10nF
in Q4	C12	100nF	220nF	100nF	100nF	100nF	100nF	100nF	100nF	100nF	100nF
out	C13	100nF	100nF	100nF	100nF	100nF	100nF	100nF	1uF	1uF	100nF
shape	C14	8.2nF	6.8nF	12nF	4.7nF	4.7nF	4.7nF	4.7nF	3.9nF	2.2nF	5.6nF
power filter	C15	100uF	100uF	100uF	100uF	100uF	100uF	100uF	100uF	100uF	100uF
anti-RFI (optional)	C16	100p	100p	100pF	100p	100p	100p	100p	100p	100p	100p
doom	C17	1nF	2.2nF		1.5nF	1.5nF	1.5nF	1.5nF	1.5nF	1.5nF	1.5nF
tone pin 2&GND	Cx				47pF						
sustain pins 2&3	Cy		2.2nF								
clipping	D1-2	1N914 / 1N4148	1N914 / 1N4148	1N914 / 1N4148	1N914 / 1N4148	1N914 / 1N4148	1N914 / 1N4148	1N914 / 1N4148	1N914 / 1N4148	1N914 / 1N4148	1N914 / 1N4148
clipping	D3-4	LED	LED	1N914 / 1N4148	LED	LED	LED	LED	LED	LED	LED
clipping	D5-9	1N914 / 1N4148	1N914 / 1N4148		1N914 / 1N4148	1N914 / 1N4148	1N914 / 1N4148	1N914 / 1N4148	1N914 / 1N4148	1N914 / 1N4148	1N914 / 1N4148
polarity	D10	1N4001	1N4001	1N4001	1N4001	1N4001	1N4001	1N4001	1N4001	1N4001	1N4001
transistors	Q1-4	BC109C	Q1&4 MP5A18 Q2&3 BC109C	2N5088	2N5133	2N5133/ FS36999	Equivs: 2N5089/ 2N5210	Equivs: 2N5089/ 2N5210	BC239/ MP5A18	FS36999 /BC239C	2N5133 rcmond: BC549C

GRIND CUSTOMS FX

WWW.GRINDCUSTOMSFX.COM



UltraStoner v1
GrindCustoms FX

GRIND CUSTOMS FX

WWW.GRINDCUSTOMSFX.COM

- | -
| • | DOOM | • |
- | -
TOAN | • | SHAPE
- | -
| • | GRUNT | • |
- | -
VOL | • | GAIN
- | -
| - | -
•
ULTRASTONER

- | - | -
TOAN | • | SHAPE
- | - | -
| • | DOOM | • |
- | - | -
VOL | • | GAIN
- | - | -
| • | GRUNT | • |
- | - | -
•
•
ULTRASTONER