

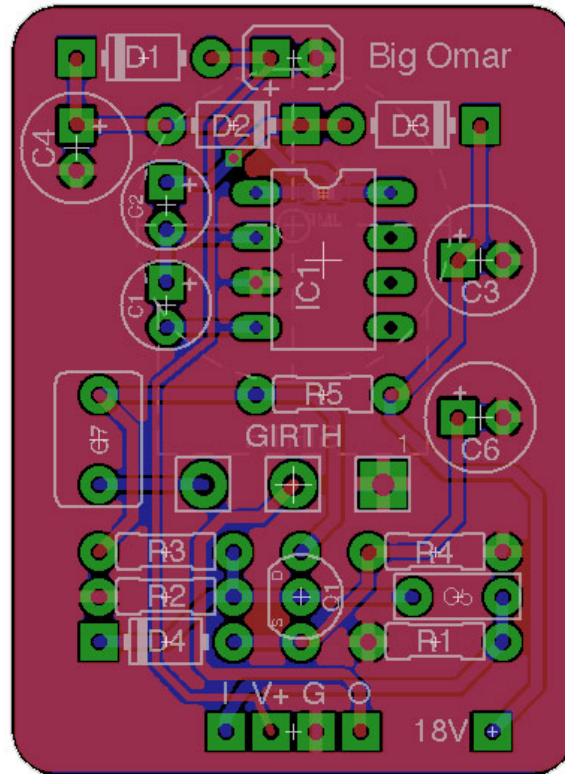
JUANSOLOFX

STOMPAGE.JUANSOLO.CO.UK

JSFX?

JSFX isn't actually a thing. It's just something to call me and Cleggy who are making effects for ourselves along with the PCB layout ninjitsu of Jason (Jubal81). Some of those PCBs might make it out into the wild so I thought I'd do some docs for them.

BIG OMAR



OVERVIEW

Big Omar, as well as being a fairly well known British porn star, is our boost effect.

It's essentially our Baby Boottube made silicon, or at least an approximation of it. What's most impressive about it is that it's nigh on identical sonically. Which is awesome because the BBT does a great job of sounding like another stage in a single channel amp.

NOTES

The jumper pad on the back of the board is for if you're using a charge pump that requires pins 1 and 8 together. Blob it if you do, don't if you don't.

The 18V pad was added for use in multi builds where you avoid having multiple charge pumps. You can use this as an 18V take off from this charge pump to drive a 2nd effect. Or if you don't fit the pump to this effect, an 18V in.

JUANSOLOFX

STOMPAGE.JUANSOLO.CO.UK

BOM

R1	2M2	C1	10U	D1	1N5817
R2	3M3	C2	10U	D2	1N5817
R3	3M3	C3	47U	D3	1N5817
R4	1K	C4	47U	D4	15V ZENER
R5	8K2	C5	100N	Q1	BS170
		C6	22Uf	IC1	LT1054
		C7	680N	GIRTH	A100K

SCHEMATIC

