

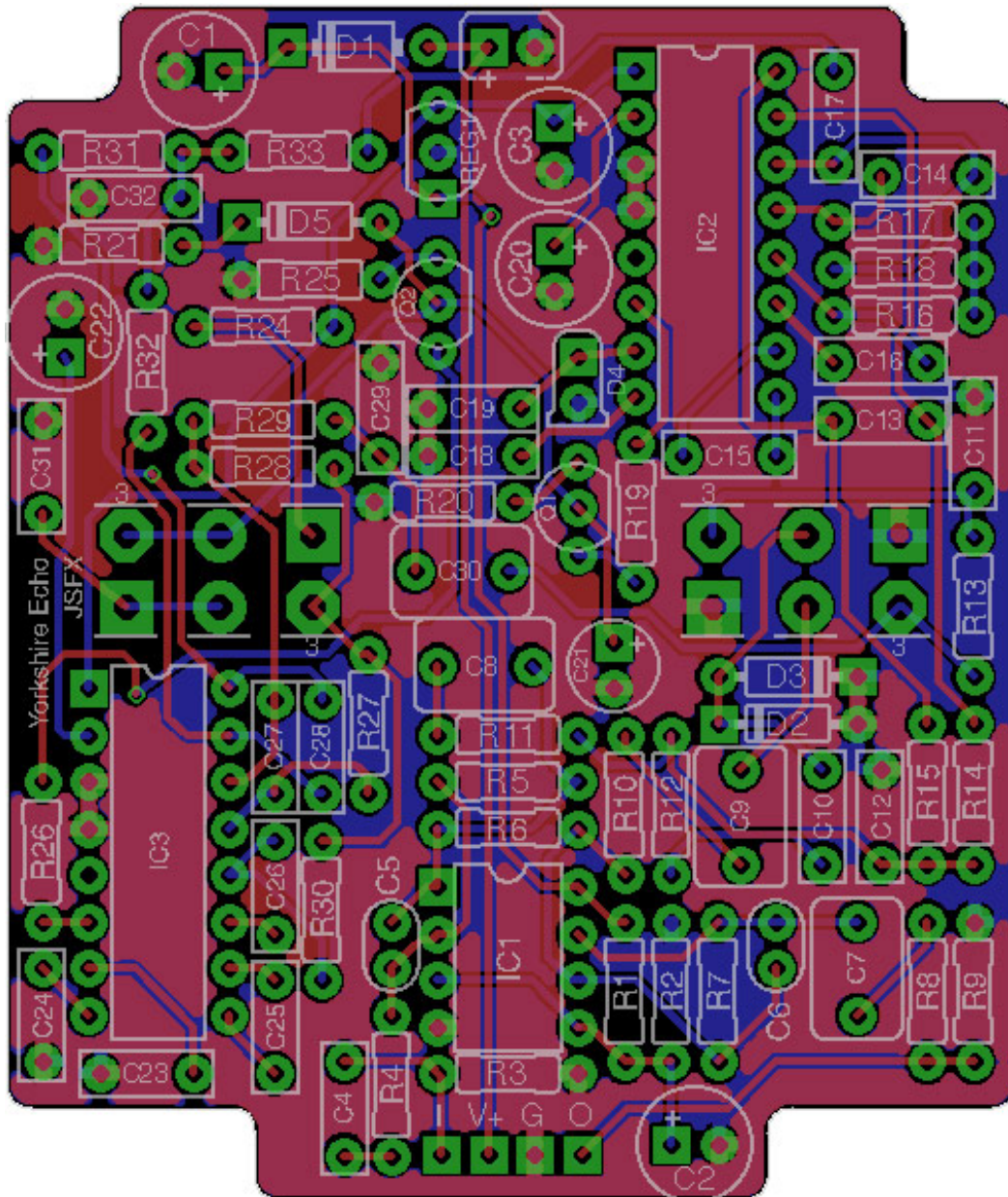
JUANSOLOFX

STOMPAGE.JUANSOLO.CO.UK

JSFX?

JSFX isn't actually a thing. It's just something to call me and Cleggy who are making effects for ourselves along with the PCB layout ninjitsu of Jason (Jubal81). Some of those PCBs might make it out into the wild so I thought I'd do some docs for them.

YORKSHIRE ECHO



OVERVIEW

This is essentially a mash-up of my two favourite DIY delays. It's essentially a De Profundis with two Delay ICs like a Zero Point DD. I like to call it the Deux Profundis, but The Yorkshire Echo works (and sounds like a local newspaper). Jason's ninjitsu was strong on this one. This is the absolute maximum size to fit in the Camden Boss RTM5003 enclosure the way I build them. But it should also go into a Hammond 1590!

JUANSOLOFX

STOMPAGE.JUANSOLO.CO.UK

BOM

RESISTORS		CAPACITORS		OTHER PARTS	
R1	10K	C1	100U	D1	1N5817
R2	10K	C2	47U	D2	1N914
R3	1M	C3	100U	D3	1N914
R4	150K	C4	22N	D4	GREEN LED
R5	330K	C5	100P	D5	1N914
R6	22K	C6	100P		
R7	10K	C7	680N**	REG	LM78L05
R8	1K	C8	680N**		
R9	1M	C9	680N**	Q1	BC550
R10	22K	C10	22N	Q2	BC550
R11	22K	C11	47N		
R12	10K	C12	10N	IC1	TL072
R13	1K	C13	2N2	IC2 & IC3	PT2399
R14	10K	C14	2N2		
R15	10K	C15	100N	DELAY	B50K*
R16	10K	C16	100N	MIX	B50K
R17	10K	C17	100N	FEEDBACK	B50K
R18	22K	C18	100N	TONE	B50K
R19	1K	C19	100N		
R20	560R	C20	47U		
R21	1K2	C21	1U		
R24	2K2	C22	47U		
R25	620R	C23	100N		
R26	1K	C24	100N		
R27	10K	C25	100N		
R28	22K	C26	100N		
R29	1K	C27	2N2		
R30	10K	C28	2N2		
R31	10K	C29	10N		
R32	10K	C30	680N**		
R33	10K	C31	100N		
		C32	10N		

There is no R22 or R23... You're not imagining it.

* Meter all your 50K pots and use the highest reading one for the delay pot. Anything that measures 50K or more should be fine.

**For C7, C8, C9 & C30 we generally use 680n caps. Though 1u will work ok.

JUANSOLOFX

STOMPAGE.JUANSOLO.CO.UK

