

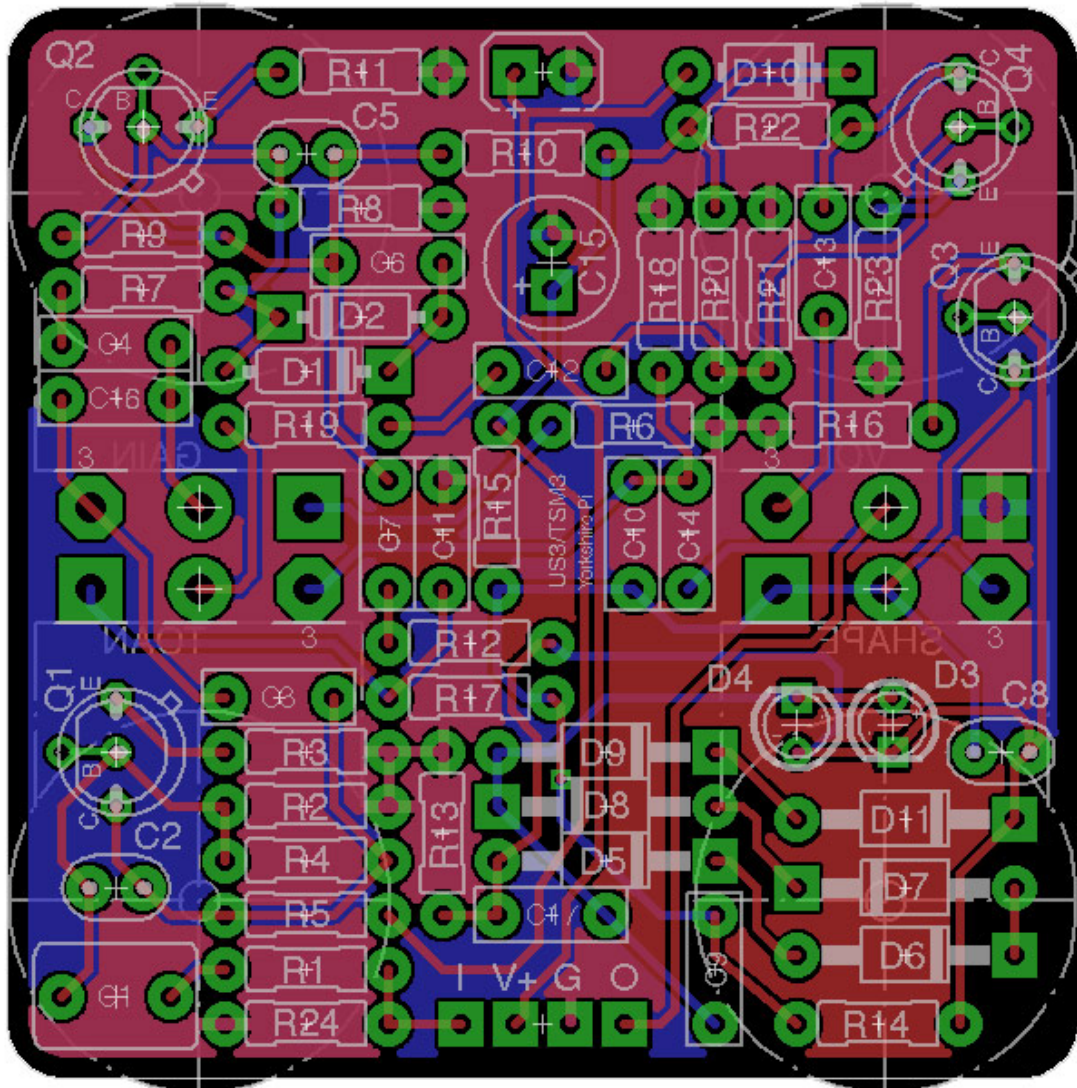
JUANSOLOFX

STOMPAGE.JUANSOLO.CO.UK

JSFX?

JSFX isn't actually a thing. It's just something to call me and Cleggy who are making effects for ourselves along with the PCB layout ninjitsu of Jason (Jubal81-ApetoneFX). Some of those PCBs might make it out into the wild so I thought I'd do some docs for them.

YORKSHIRE PI



OVERVIEW

This is a simplified Muff board for the buildage of a cut down UltraStoner and TSM680 specifically, but also cover any muff you might want to make on there. We've included a couple more in the doc below.

The idea behind this is that each build focuses on what that version of the muff does best. So the US is sludgy and soft with germ clippers, and the TSM680 is aggressive and hard with LEDs.

JUANSOLOFX

STOMPAGE.JUANSOLO.CO.UK

ULTRASTONER BOM

R1	33K	C1	1U	D1 & 2	1N914
R2	100K	C2	470P	D3 & 4	OMIT
R3	100R	C3	220N	D5-9 & 11	UNICORNS
R4	470K	C4	220N	D10	1N5817
R5	18K	C5	470P		
R6	820R	C6	1U	Q1	BC109C
R7	8K2	C7	330U	Q2	BC109C
R8	56K	C8	470P	Q3	BC109C
R9	470K	C9	100N	Q4	BC109C
R10	10K	C10	1N5		
R11	100R	C11	15N	GAIN	B100K
R12	8K2	C12	100N	TONE	B100K
R13	100K	C13	100N	SHAPE	C500K
R14	470K	C14	8N2	VOLUME	A100K
R15	18K	C15	100U		
R16	100R	C16	OMIT		
R17	33K	C17	1N		
R18	33K				
R19	8K2				
R20	390K				
R21	100K				
R22	10K				
R23	2K7				
R24	1M				

JUANSOLOFX

STOMPAGE.JUANSOLO.CO.UK

TSM680 BOM

R1	33K	C1	470N	D1 & 2	1N914
R2	100K	C2	470P	D3 & 4	LED
R3	150R	C3	100N	D5-9 & 11	OMIT
R4	470K	C4	100N	D10	1N5817
R5	15K	C5	680P		
R6	470R	C6	680N	Q1	MPSA18
R7	7K5	C7	220N	Q2	BC109C
R8	56K	C8	680P	Q3	BC109C
R9	470K	C9	680N	Q4	MPSA18
R10	22K	C10	3N3		
R11	100R	C11	10N	GAIN	B100K
R12	7K5	C12	220N	TONE	B100K
R13	100K	C13	100N	SHAPE	C500K
R14	470K	C14	6N8	VOLUME	A100K
R15	22K	C15	100U		
R16	100R	C16	2N2		
R17	33K	C17	OMIT		
R18	33K				
R19	0R-JUMPER				
R20	422K				
R21	100K				
R22	10K				
R23	2K7				
R24	1M				

JUANSOLOFX

STOMPAGE.JUANSOLO.CO.UK

'71 TRIANGLE BOM

R1	33K	C1	100N	D1 & 2	1N914
R2	100K	C2	470P	D3 & 4	1N914
R3	100R	C3	100N	D5-9 & 11	OMIT
R4	470K	C4	100N	D10	1N5817
R5	18K	C5	470P		
R6	1K	C6	100N	Q1	2N5088
R7	8K2	C7	100N	Q2	2N5088
R8	100K	C8	470P	Q3	2N5088
R9	470K	C9	100N	Q4	2N5088
R10	10K	C10	4N		
R11	100R	C11	10N	GAIN	B100K
R12	8K2	C12	100N	TONE	B100K
R13	100K	C13	100N	SHAPE	C500K
R14	470K	C14	4N7	VOLUME	A100K
R15	18K	C15	100U		
R16	100R	C16	OMIT		
R17	33K	C17	OMIT		
R18	33K				
R19	0R-JUMPER				
R20	390K				
R21	100K				
R22	10K				
R23	2K7				
R24	1M				

JUANSOLOFX

STOMPAGE.JUANSOLO.CO.UK

DGM 3 BOM

R1	33K	C1	100N	D1 & 2	1N914
R2	100K	C2	470P	D3 & 4	1N914
R3	100R	C3	100N	D5-9 & 11	OMIT
R4	470K	C4	100N	D10	1N5817
R5	12K	C5	470P		
R6	560R	C6	100N	Q1	2N5088
R7	8K2	C7	100N	Q2	2N5088
R8	100K	C8	470P	Q3	2N5088
R9	470K	C9	100N	Q4	2N5088
R10	12K	C10	3N9		
R11	100R	C11	10N	GAIN	B100K
R12	8K2	C12	100N	TONE	B100K
R13	100K	C13	100N	SHAPE	C500K
R14	470K	C14	12N	VOLUME	A100K
R15	12K	C15	100U		
R16	100R	C16	OMIT		
R17	33K	C17	OMIT		
R18	33K				
R19	0R-JUMPER				
R20	470K				
R21	100K				
R22	12K				
R23	2K7				
R24	1M				

JUANSOLOFX

STOMPAGE.JUANSOLO.CO.UK

